

Multiple Sclerosis Facts

Multiple sclerosis (MS) is an unpredictable, often disabling disease of the central nervous system that disrupts the flow of information within the brain, and between the brain and body.

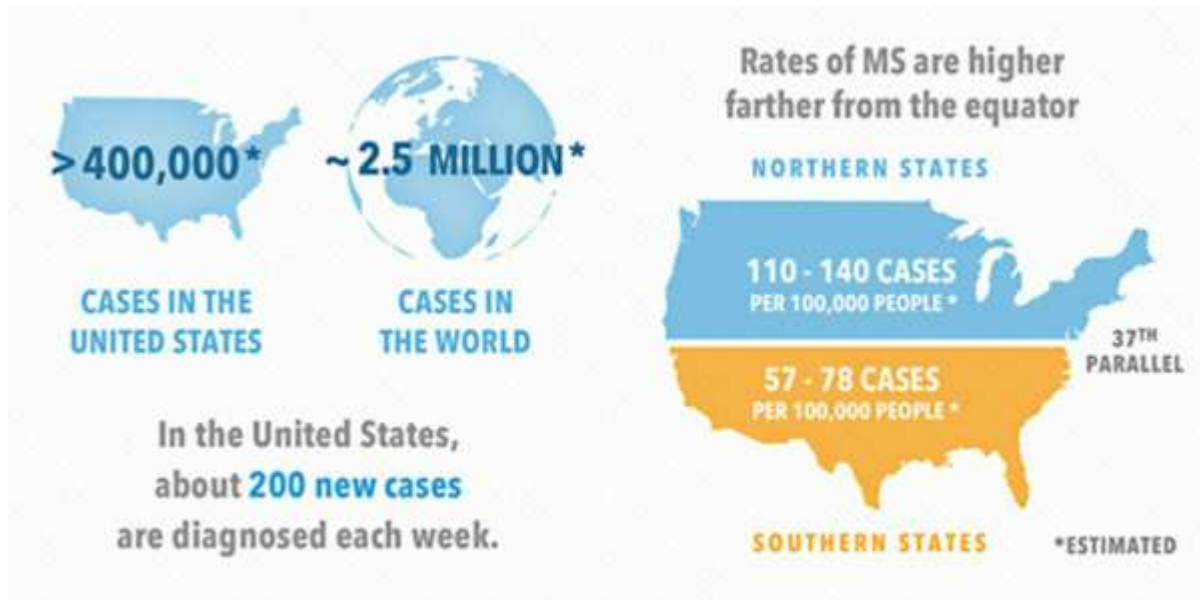


Image courtesy of Country Singer Clay Walker's Band Against MS. BandAgainstMS.org

- Estimates indicate that 400,000 Americans have Multiple Sclerosis.
- As many as 10,000 of the 400,000 Americans with MS are age 18 or under.
- In Oklahoma 3,400 are estimated to have Multiple Sclerosis.
- While the risk of developing MS in the United States general population is 1/750, the risk rises to 1/40 in anyone who has a close relative (parent, sibling, child) with the disease.
- Two to three times more women have MS than men.
- MS occurs in most ethnic groups, including African-Americans, Asians and Hispanics/Latinos, but is more common in Caucasians of northern European ancestry.
- Every hour of every day someone is told they have multiple sclerosis.
- Most people are diagnosed with MS between the ages of 20 and 50 years of age.

All information provided by the National MS Society, unless noted.

You Can Help Cure MS. – WipeOutMS.tel